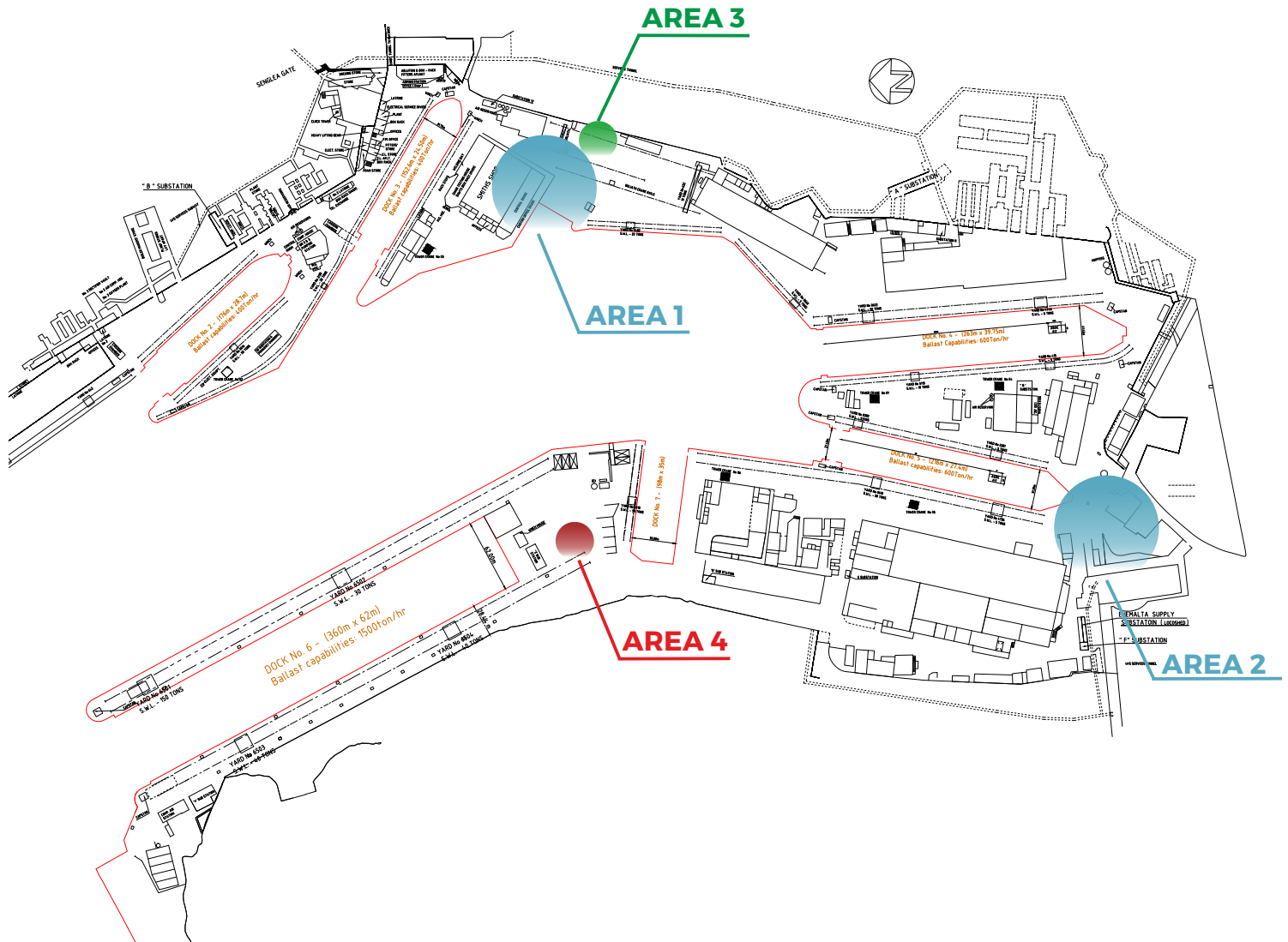


Accommodation



The Yacht Crew Hostel (Area 1), thanks to its capacity to accommodate up to 108 guests, is one of the greatest achievements in customer services within the Palumbo Group. Yard's hotel is fit with a fully equipped Wellness area, including a Jacuzzi pool, a sauna and an equipped body treatment area. As Palumbo takes utmost care of well-being of its crew and guests, this is the perfect place where to chill out and relax after a tough working day. The Yacht Club is the real spot for guests both from inside and outside our facilities. It consists of a fully equipped gym, a living area, a games room and an outdoor area. All spaces are completely free entry and often host dedicated events. Palumbo Malta Shipyards Hostel (Area 2) is a huge facility brought to new life reconvertng the Electrical complex of the Yard in 2017. The facility is strategically located close to the main Yard's Docks, in a quiet and safe area, and can hosts up to 166 guests per time within its 3 floors. All rooms (double, quadruple and multi-beds types) and all the connected areas have been recently renovated and equipped with AC, free Wi-Fi access, mini-fridge and all the necessary comforts. The facility has been equipped on its ground floor with a spacious common dining room and a self-service laundry area (equipped with 2 washing machines and 2 dryers) Cleaning and maintenance is operated by qualified personnel every day The Shipyard has completed works to provide its customers with high quality restaurant services. The area dedicated to lunches & dinners is the restaurant "La Taverna Palumbo SY" (Area 3), located right behind the Yacht Crew Hostel. The restaurant provide space for 100 people with all the comforts such as Wi-Fi, air conditioning, etc. It is organized as a self-service area, however customized catering services can be arranged in order to satisfy customers' requests. The Shipyard is also equipped with a big mess room nearby the VLCC dock n.6 (Area 4). The area provides adequate space for approx. 250 persons, who can enjoy their own cooked food or can ask for customized catering services.

General Overview

Superyacht Area

	<i>No. Rooms</i>	<i>Pers / room</i>	<i>Tot. Persons</i>	<i>Ensuite Bathroom</i>
<i>Block A– “The Suite”</i>	5	2	10	Yes
<i>Block B– “The Corridor”</i>	3	2	6	Yes
<i>Block C– “The Gallery”</i>	9	2	18	Yes
<i>Block D– “Office Rooms”</i>	3	2	6	No
<i>Block E– “The new area”</i>	17	2	34	Yes
<i>Block F– “The new area”</i>	17	2	34	Yes
	54		108	

Commercial Shipyard Area

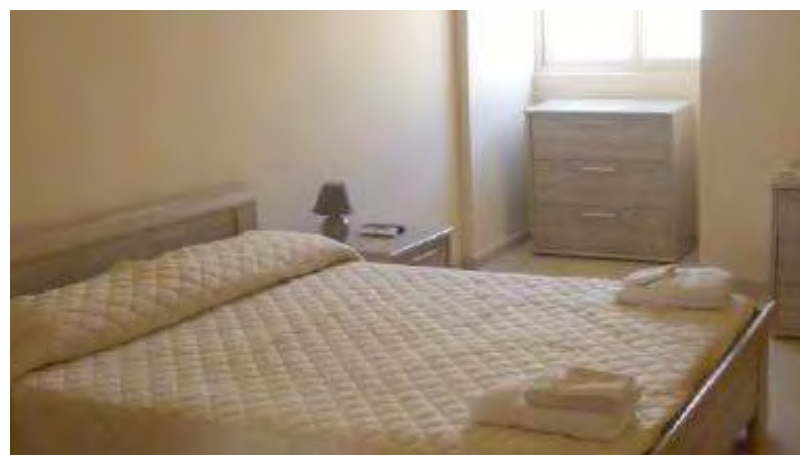
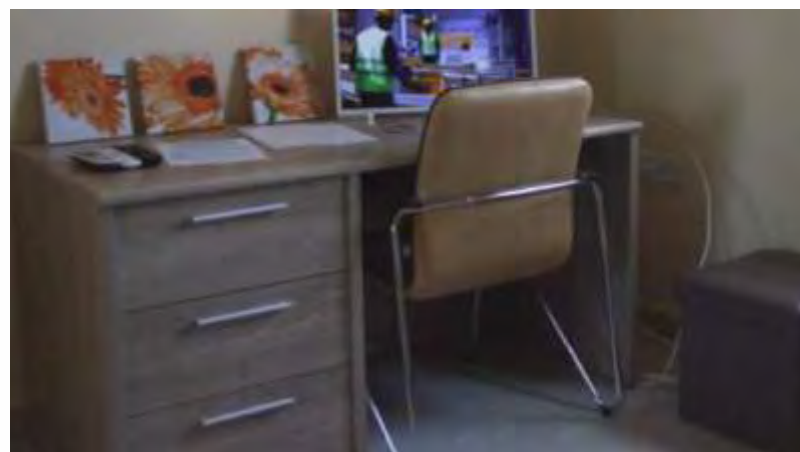
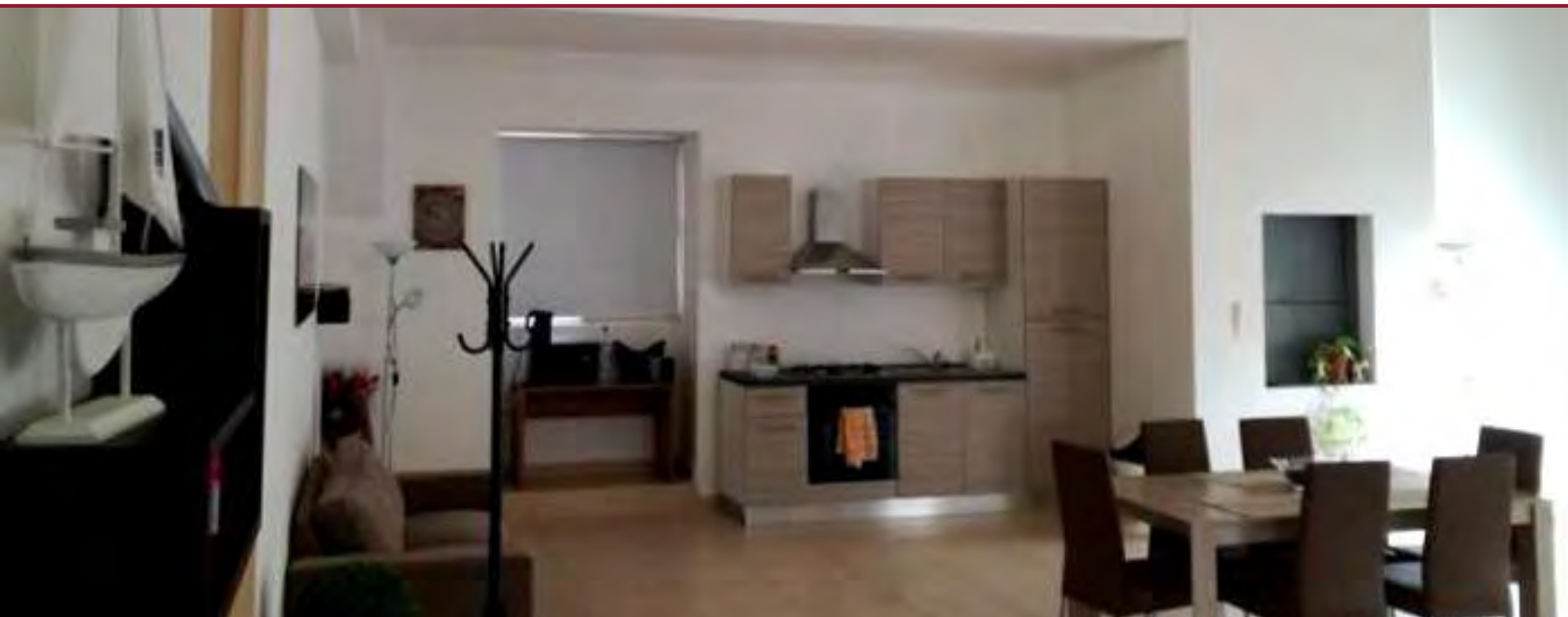
	<i>No. Rooms</i>	<i>Pers / room</i>	<i>Tot. Persons</i>	<i>Ensuite Bathroom</i>
<i>1st floor</i>	5	4	20	No
	1	2	2	
<i>2nd floor</i>	7	4	28	No
<i>3rd floor A</i>	1	8	8	No
	3	4	12	
	3	6	18	
	6	2	12	
<i>3rd floor B</i>	13	2	26	No
	10	4	40	
	49		166	

Area 1

Superyacht Area



The Yacht Crew Hostel



The yacht club

Spa & Wellness Palumbo SY



The yacht club

Gym Palumbo SY



Area 2

Commercial Shipping Area



Area 3

Restaurant "LaTaverna Palumbo SY"

